

CYLINDER PRESSURE REGULATORS FMD 500-26/-27



**Single-stage, with inert gas purging, for reactive, flammable, oxidizing and corrosive gases and gas mixtures, not for oxygen, purity max. 6.0, cylinder pressure 230 bar downstream pressure range 0.5 - 200 bar /7 - 2900 psi**

**SPECIAL FEATURES**

- Diaphragm shut-off valve
- Diaphragm pressure regulator
- ATEX compliant adjustment knobs
- Optionally with sub-atmospheric pressure regulation (FMD 510)
- Optional gas-tight welded connections for optimum purge conditions and maximum safety

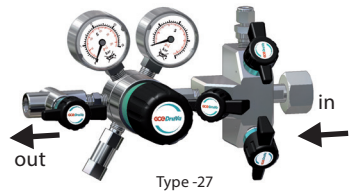
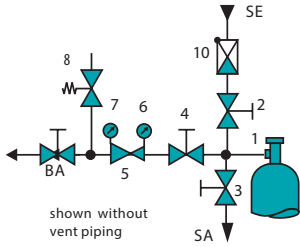
**DESCRIPTION**

These pressure regulators consists of a cylinder connection, purge valve block with a check valve, purge inlet and outlet valve, pressure regulator body, upstream and downstream pressure gauges, relief valve (by downstream pressure >50bar RV on request), and outlet tube fittings, (FMD 500-27 with diaphragm shut-off valve MVA 500 G). Optionally the pressure regulator, purge valve block and cylinder connection can be joined with one another using orbital welding for a gas-tight connection. The use of contact gauge (accessories) in conjunction with alarm box (accessories) facilitates the monitoring of gas reserves.

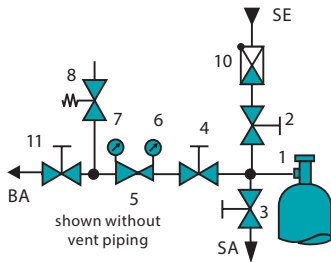
**APPLICATION**

The cylinder pressure regulator series FMD 500 stands out for its wide range of uses and excellent performance. The upstream purge valve block allow as an external gas purging with inert gas. The purge volume is kept to a minimum (only cylinder connection) and the purge gases can be separately conveyed. Therefore this regulator is especially suited to use with reactive, flammable, oxidizing and corrosive gases. It guarantees optimum purge conditions and with toxic gases maximum safety for the application and for the operator.

**FLOW SCHEMATIC**



**FLOW SCHEMATIC**



**TECHNICAL DATA**

Body:	stainless steel 316L (1.4404) specially cleaned and electro-polished
Seals:	PCTFE
Relief valve seat seals:	FKM, (EPDM, FFKM) *
Pressure gauge range:	-1 - 10 bar / 0 - 25 bar / 0 - 40 bar / 0 - 80 bar / 0 - 315 bar
Weight:	approx. 2.9 kg (type -26), 3.3 kg (type -27)
Dimensions (w×h×d):	approx. 310×180×125 mm
Performance data:	see chapter 5
Basic design aspects:	see page 13
Purge inlet:	check valve, tube fitting 6 mm
Purge outlet:	NPT 1/4" f, optional tube fitting
Cylinder connections:	according to gas type, see chapter 5
Outlet:	NPT 1/4" f, optional tube fitting

\* on request

- 1 Cylinder connection
- 2 Purge inlet valve
- 3 Purge outlet valve
- 4 Upstream shut-off valve
- 5 Cylinder pressure regulator
- 6 Upstream pressure gauge
- 7 Downstream pressure gauge
- 8 Relief valve
- 10 Check valve
- 11 Downstream shut-off valve (only type -27)
- BA Process gas outlet
- SE Purge inlet
- SA Purge outlet

**ORDER CODE**

Type	Material	Upstream pressure	Downstream pressure	Inlet	Outlet	Contact gauge	Vent piping	Gas type
<b>FMD 500-26</b>	<b>SS</b>	<b>F</b>	<b>6</b>	<b>DIN</b>	<b>CL6</b>	<b>Ki</b>	<b>A</b>	<b>GAS</b>
FMD 500-26	SS = stainless steel	F = 230 bar	6 = 0.5 - 6 bar	DIN	0=NPT 1/4" f	0 = without	0 = without	Please specify (no O2)
FMD 500-27	steel		14 = 1 - 14 bar	ANSI	CL3**	Ki = with	A = with	
			28 = 2.5 - 28 bar	AFNOR	CL6(Standard)		(Only in conjunction with RV)	
			50 = 2.5 - 50 bar	NBN	CL8			
			200 = 10 - 200 bar	BS 341	CL 1/8"			
				CGA	CL 1/4"			
				NEN, UNI				

\*\* Outlet: CL6 = tube fitting for 6 mm outside diameter, NO6 = hose connector for 6 mm hose inside diameter. Please note the "burst rate chart" when choosing the tube fittings in chapter 5.