

## CYLINDER PRESSURE REGULATORS FMD 502-26/-27



Type -26



Type -27

**Dual-stage, with external gas purging, for inert, reactive, flammable and oxidizing gases and gas mixtures, not for oxygen, purity max. 6.0, cylinder pressure 230 bar / 3300 psi, downstream pressure range 0.2 - 6 bar / 3 - 85 psi**

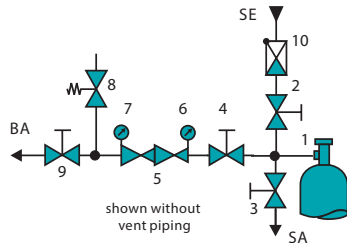
### SPECIAL FEATURES

- With inert gas purging
- Optimum purge conditions with purge valve block
- Downstream pressure virtually independent of upstream pressure due to dual-stage design
- With diaphragm shut-off valve
- Diaphragm pressure regulator
- ATEX compliant adjustment knobs

### DESCRIPTION

These pressure regulators consists of a cylinder connection, purge valve block with a check valve, purge inlet and outlet valve, pressure regulator body, upstream and downstream pressure gauges, diaphragm relief valve MVA 500 (only type -27), relief valve, and outlet tube fittings. Optionally the pressure regulator, purge valve block and cylinder connection can be joined with one another using orbital welding for a gas-tight connection. The use of contact gauge (accessories) in conjunction with alarm box (accessories) facilitates the monitoring of gas reserves.

### FLOW SCHEMATIC



- 1 Cylinder connection
  - 2 Purge inlet valve
  - 3 Purge outlet valve
  - 4 Upstream shut-off valve
  - 5 Cylinder pressure regulator
  - 6 Upstream pressure gauge
  - 7 Downstream pressure gauge
  - 8 Relief valve
  - 9 Downstream shut-off valve (only type -27)
  - 10 Check valve
- BA Process gas outlet  
SE Purge inlet  
SA Purge outlet

### APPLICATION

The pressure regulator series FMD 500 stands out for its wide range of uses and excellent performance. The dual-stage design ensures the uniformity of the downstream pressure irrespectively of the level of the cylinder pressure. The upstream purge valve block allow as an external gas purging with inert gas. The purge volume is kept to a minimum (only cylinder connection) and the purge gases can be separately conveyed. Therefore this regulator is especially suited to use with reactive, flammable, oxidizing and corrosive gases. It guarantees optimum purge conditions and with toxic gases maximum safety for the application and for the operator.

### TECHNICAL DATA

Body:	stainless steel 316L (1.4404) specially cleaned and electro-polished
Seat seals 1st stage:	PCTFE
Seat seals 2nd stage:	PTFE
Body seals:	PCTFE
Relief valve seat seals:	FKM, (EPDM, FFKM)*
Performance data:	see chapter 5
Basic design aspects:	see page 13
Pressure gauge range:	-1 - 5 bar (-15 - 75 psi)
	-1 - 10 bar (-15 - 145 psi)
	0 - 315 bar (0 - 4500 psi)
Weight:	approx. 3.5 kg (type -26), 3.9 kg (type -27)
Dimensions (wxhxd):	approx. 310x180x230 mm
Purge inlet:	check valve, tube fitting 6 mm
Purge outlet:	NPT 1/4"f, optional tube fitting
Cylinder connections:	according to gas type, see chapter 5
Outlet:	NPT 1/4"f, optional tube fitting

\* on request

### ORDER CODE

Type	Material	Upstream pressure	Downstream pressure	Inlet	Outlet	Contact gauge	Vent piping	Gas type
<b>FMD 502-26</b>	<b>SS</b>	<b>F</b>	<b>3</b>	<b>DIN</b>	<b>CL6</b>	<b>Ki</b>	<b>A</b>	<b>GAS</b>
FMD 502-26	SS = stainless steel	F = 230 bar / 3300 psi	3 = 0.2 - 3 bar / 3 - 45 psi	DIN	0=NPT 1/4"f	0 = without	0 = without	Please specify (no O2)
FMD 502-27	steel		6 = 0.5 - 6 bar / 3 - 85 psi	ANSI AFNOR NBN B5 341 CGA NEN, UNI	CL3** CL6 (standard) CL8 CL 1/8"	Ki = with	A = with (Only in conjunction with RV)	

Subject to change without notice

\*\* Outlet: CL6 = tube fitting for 6 mm outside diameter, NO6 = hose connector for 6 mm hose inside diameter. Please note the "burst rate chart" when choosing the tube fittings in chapter 5.